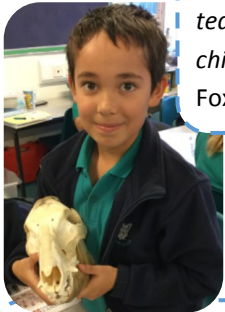


Archaeology for Primary Schools: Cambridge Archaeology Learning Foundation



"Approachable, relaxed teaching style that the children related to well."
Foxton Primary



"The use of resources were excellent and the children enjoyed the hands on learning. Having an expert guiding the sessions was really good." Over Primary School



UNIVERSITY OF
CAMBRIDGE



Access
Cambridge
Archaeology

A new programme offering **hands-on** teaching for KS1 & KS2 pupils.

Sessions designed to introduce concepts of the past, encourage **lateral thinking** and use of **multiple subject** skills. Learning is supported by interactive activities using **real** artefacts.



"Actually having a chance to see real artefacts and speak to each other trying to figure out what



and where things were from and what they were.

Really useful and motivating. Thank you." St Laurence Primary School

Lessons within your classroom

- 2 hours sessions with a class
- Range of activities
- Covers stone age to the present and local history

Sessions can be tailored according to your needs and budget



Teaching History National Curriculum aims

- **Methods** of historical enquiry
- Historical **concepts** of continuity and change
- How **evidence** is used to make historical claims
- Historical **perspective**



"A good mix of both hands on and thinking. Great range of artefacts." Foxton Primary

Contact

Email: access@arch.cam.ac.uk

Phone: 01223 761519

www.access.arch.cam.ac.uk/schools/CALF

"Brilliant morning, would thoroughly recommend this. Emily was in total command of the class from the beginning and had them hooked throughout." Somerlyton Primary

